

***North Yunnan Off the beaten tracks trek
From Lugu lake to the Tiger Leap Gorge, 10 days***

Lijiang - Lac Lugu - Zhuangzi - Baojiahe - Zizhuang -
Liuqing - Baoshan Daju - Gorges du Tigre - Lijiang

Day 1: Arrival in Lijiang.

Upon arrival at Lijiang Airport, a driver will be waiting for you with a sign bearing your name to take you to your hotel in the old town of Shuhe, a few kilometres from Lijiang, at the foot of Jade Dragon Mountain. Rest of the day and meals at leisure, overnight at the Bivou Hotel.



Day 2: Lijiang – Lugu Lake (B). ~4h drive — Altitude: 2680m.

After breakfast, your English-speaking driver meets you at your hotel. A substantial half-day drive from Lijiang to Lugu Lake. Lunch at your expense along the way. A short boat ride on the lake upon arrival, including a stop at Liwubi Island. Straddling the provinces of Sichuan and Yunnan, Lugu Lake is the epicentre of Mosuo culture, a people of matrilineal tradition. In the evening, meet the English-speaking guide-driver who will accompany you throughout your stay and during your trek. Meals at your expense. **Overnight at the September Sky Homestay**



Day 3: Lugu Lake – Zhuangzi (B, L, D). ~6h walking. Elevation gain/loss: +900m / -900m

Transfer to the town of Yongning. Start of the trek, with a first ascent through a beautiful forest of azaleas and rhododendrons for 3 hours, reaching a pass at 3600m. This ascent is mainly under forest cover, along a mule path (part of the ancient Tea and Horse Road). Descent to the Pumi minority village of Zhuangzi (alt. 2700m). Dinner and **overnight with a Pumi family** (shared showers and toilets).



Day 4: Zhuangzi – Baojiahe (B, L, D) ~4–5h walking Elevation gain/loss: +100m / -700m

4 to 5 hours of hiking today through Mosuo, Pumi (Songping) and Lisu (Dilou) villages, in a wild rural landscape, to reach the Lisu minority village of Baojiahe in the mountains, at 2100m. **Overnight with a Lisu family** (no showers tonight).



Day 5: Baojiahe – Labo – Dashan (B, L, D) ~4h walking Elevation gain/loss: +400m / -600m

Morning walk to reach a first pass after one hour, then 3 hours down the valley towards the river, where you will have lunch in the village of Labo. Continue walking for about 2 hours to the Mosuo village of Dashan at 2300m. **Overnight with a Mosuo family.**

Day 6: Zizhuang – Liuqing (B, L, D) ~6h walking Elevation gain/loss: +450m / -300m

A 2-hour descent this morning towards the Yangtze River, which you will cross. Walk up on the opposite side to the Naxi village of Lianhu Wan, then to Upper Liuqing Village (2 hours walking). Lunch. Continue to Lower Liuqing Village, located at 2350m (about 2 hours walking in the afternoon). **Overnight with a Naxi family** in Lower Liuqing (shared toilets, no showers).



Day 7: Liuqing – Baoshan (B, L, D) ~5–6h walking Elevation gain/loss: +250m / -600m

5 to 6 hours of walking today, first to the summit of the so-called “Prince Mountain” (2470m), then passing through two tunnels carved into the mountain (90m and 60m). Continue along a spectacular descending path on the mountainside to the village of Baoshan (1900m). This village built atop a large rocky outcrop is reminiscent of Machu Picchu to some visitors. Overnight at the Mu Family Guesthouse (shared toilets and showers), likely the guesthouse with the most beautiful view in all Yunnan from its terrace!

Day 8: Baoshan – Daju – Tiger Leaping Gorge (B, L) ~2h walking Elevation gain/loss: +200m / -200m

Short walk then drive to the village of Daju, located at the entrance of Tiger Leaping Gorge in a beautiful valley. Crossing of the Yangtze. Walk down to the lower part of the Gorge, close to the majestic river. Ascent to the middle section of the Gorge where you will spend the night. Dinner at your expense. Overnight at Jade Snow Inn Hotel (altitude : 1800m).



Day 9: Tiger Leaping Gorge – Lijiang (B) ~ 2h drive

Enjoy breakfast with an incredible view of the high peaks surrounding you. Morning hike on the upper trail of Tiger Leaping Gorge, facing the impressive 4,000m-high rock wall rising from the river to the summit of Jade Dragon Snow Mountain. Then drive back to Lijiang, where your guide bids you farewell. **Overnight at the Bivou Hotel.**

Day 10: Departure

Free time before your transfer. At the appropriate time for your departure, a vehicle will take you to Lijiang Airport or railway station. End of our services, we wish you a pleasant return home, beautiful memories in mind!

Our selection of accomodations for your tour in Yunnan:

Shuhe: The Bivou Lijiang 4* (boutique hotel)

Beautiful accommodation opened by a team of Singaporeans who fell in love with the region. A surprising blend of traditional Naxi architecture, contemporary design and modern comfort, in the heart of the Shuhe Valley.

Lugu Lake: September Sky Stay

Suspended between sky and turquoise waters, September Sky Stay offers a poetic retreat on the shores of Lugu Lake. Warm wood, clean lines and large bay windows create a bright cocoon where each room seems to converse with the landscape. Wake up facing the mountains, fall asleep to the rhythm of the waves, and enjoy the gentle local hospitality. An intimate, elegant and inspiring address to savour the magic of Mosuo country.



Zhuangzi Village: Pumi House

The village of Zhuangzi lies at 2700m and is inhabited by the Pumi ethnic group. The house has four rooms and can accommodate around ten guests. Shared sanitary facilities are available.



Bajiaohe : Lisu House

Bajiaohe is located at 2100m and inhabited by the Lisu ethnic group. Main agricultural products include walnuts, Sichuan pepper, and goat, pig and chicken farming. The house has three rooms and shared external sanitary facilities, accommodating around ten guests.



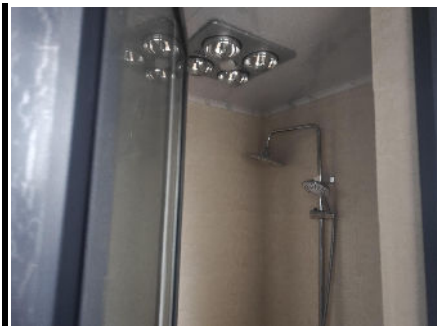
Dashan: Mosuo House

Dashan lies at 2300m and is inhabited by the Mosuo people. The house has three rooms and shared sanitary facilities. Main activities include farming: Sichuan pepper, walnuts, and goat, pig and chicken raising.



Liuqing: Naxi House

Liu Qing's Taiziguan Guesthouse has been welcoming visitors since 1995. It can host around twenty guests and has clean shared sanitary facilities. Located at 2400m, it is considered the best homestay in Fengke. The family is of Naxi ethnicity. The area is known for its Sichuan pepper and walnuts, and also for goat and poultry farming.



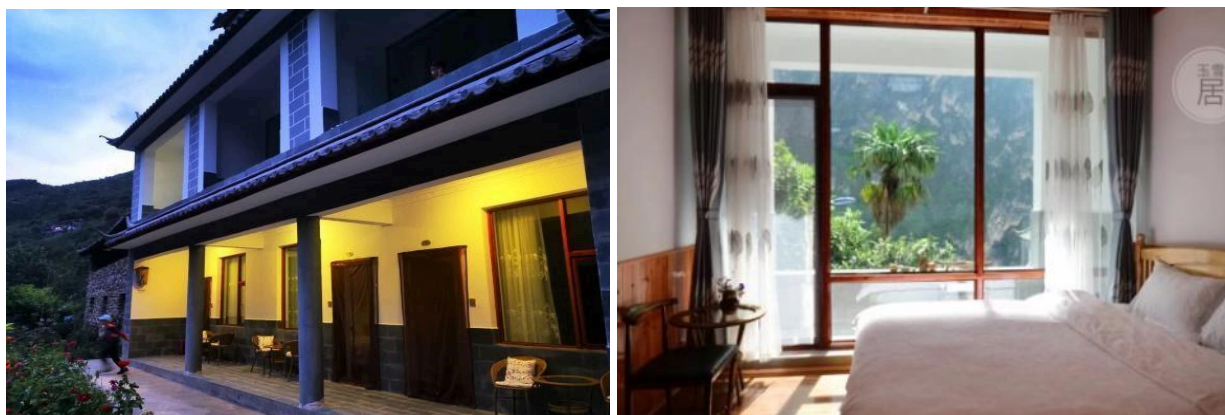
Baoshan Stone City: Mu Brothers Guest House

Opened by the four Mu brothers (one of whom is your guide on this trek), the guesthouse is well located in the village, has private sanitary facilities and offers a beautiful view of the river from higher up.



Tiger Leaping Gorge: Jade Snow Inn

A brand-new structure with only six rooms, recently opened, clean and with simple comfort, set away from tourist crowds. Each room has a small outdoor space. Attractive on-site cuisine and magnificent views. A recommended, great-value address.



Shangri La : Khimtsang Hotel (charming guest house)

In the heart of the old town, this recent establishment combines traditional architecture (massive beams, natural materials) with high energy efficiency processes (skylights, solar underfloor heating) for great comfort. The service is provided by an experienced team.



Our double location in China and France ensures you control of your trip from A to Z, without intermediary and therefore at the best possible cost! We offer you the strong field knowledge and responsiveness of our local agency, as well as the guarantees and ease of payment offered by our French agency, allowing you to travel in peace!

Our field presence in China

- Incoming local agency located in Kunming, China, since 2007
- 1 unique interlocutor during all phases of travel creation, until your return from China
- Direct booking of all our services across China
- Relationships of trust and respect with our various partners throughout China
- Search for continuous improvement and the creation of itineraries that are ever more surprising and authentic
- Availability and responsiveness on site, reachable number 24/7
- Experienced English-speaking local guides selected for their skills
- 11 expert advisors, regularly traveling in search of destinations that are still authentic
- Knowledge of the "field" allowing us to offer you adapted, exclusive and original circuits

Our agency in China

China Roads 1326 South Ring Road, Kunming, Yunnan, China. License: L-YN-00070

Phone: (0086) 159-49379-177

Website: www.China-Roads.fr & www.Yunnan-Roads.fr & www.Tibet-Roads.fr

The guarantees and advantages of our agency in France

- Payment of your trip to France by simple transfer or credit card (Visa, Mastercard and AMEX) via our secure site, avoiding expensive bank transfer fees to China or the usual charges of 4-5% of the price of the trip for a credit card payment in China
- Registration of our agency with Atout France guaranteeing our professionalism
- HISCOX Professional liability insurance
- IATA certification allowing you to benefit from the management of your international flights at negotiated rates
- Financial guarantee subscribed to the APST guaranteeing you a full refund of the sums already paid in case of failures on our part, otherwise the support of your trip under the same conditions as established with our agency

Our agencies in France (Dinan, Nice, Marseille)

VOYAGEOS, 19 rue Chateaubriand 22100 Dinan FRANCE

Telephones: +33 (0)9-83-07-44-60 or +33 (0)6-40-27-64-22 / weekdays 9-12h and 14-19h.

VOYAGEOS, 06310 Beaulieu-sur-Mer FRANCE (by appointment only)

Phone: +33(0) 7-87-67-02-27 / weekdays of 9-17h.

VOYAGEOS, Marseille FRANCE (by appointment only)

Phone: +33(0) 7-77-45-18-50 / weekdays of 9-17h.

Associative engagement

- €2 per traveler donated to 2 charities:
 - Colors of China: Sponsorship for the schooling of girls in northern Guangxi
 - Children of the Mekong: Schooling of children in Upper Yunnan
- + **planting a tree per traveler** with the Yves Rocher Foundation "Plantons pour la Planète"

"Homemade" tours - authentic traveler feedbacks

Our circuits, and more generally all the content we create and publish, are the result of extensive research and experience of more than 15 years. But they are regularly - not to say constantly - copied. Don't be surprised, but just recognize the copy of the original!

We do not post fake traveler reviews as this has unfortunately become common on the Internet. All comments on the forums and our sites are guaranteed authentic! Several testimonials from alumni of our travelers here: [Travel comments from China](http://Travel%20comments%20from%20China)

RATE - based on 2-3-4-5-6 travelers - INCLUSIONS and EXCLUSIONS:

North Yunnan Off the beaten tracks trek From Lugu lake to the Tiger Leap Gorge, 10 days

- ☐ RMB8900 (EUR1113) per person on a 2 travelers' basis
- ☐ RMB7600 (EUR950) per person on a 3 travelers' basis
- ☐ RMB6000 (EUR750) per person on a 4 travelers' basis
- ☐ RMB5500 (EUR688) per person on a 5 travelers' basis
- ☐ RMB4800 (EUR600) per person on a 6 travelers' basis

Applied exchange rate: €1 = ~RMB8

- Deposit on reservation of 50% of travel expenses, by transfer or credit card in France

- Balance 3 weeks before departure, again by bank transfer or credit card in France

This rate includes:

- Accommodation in the mentioned hotels with breakfast
- All transfers by private vehicle as mentioned in the program
- English-speaking guide from Day 2 to Day 9
- The meals indicated during the trek (from lunch on day 3 to lunch on day 8)
- Carrying of your heavier luggage during the trek
- Entrance fees and activity costs as per the program
- 24/7 assistance from our agency in Kunming, insurance and guarantees from our French agency

This rate does not include:

- Personal expenses and activities not explicitly mentioned in the program
- Not clearly included meals
- Tips for drivers and guides
- Personal travel insurance and Chinese visa fees
- Arrival and departure trips to/from Lijiang (we can include them also, consult us)

Program subject to slight change due to schedule changes or cancelation of airlines, availability of guides and hotels or bad weather.



In China : Yunnan Roads, 219 Chuncheng Road, Kunming, Yunnan, China

In France : Voyages, 19 rue Chateaubriand 22100 Dinan

